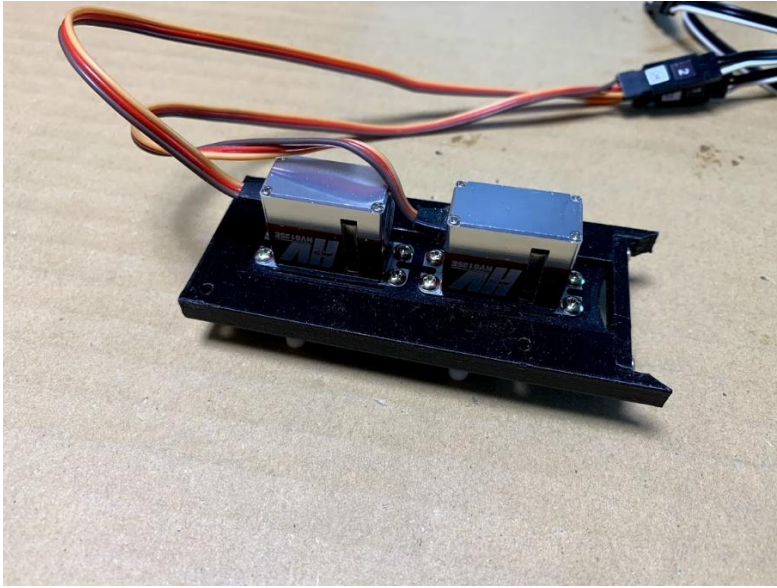
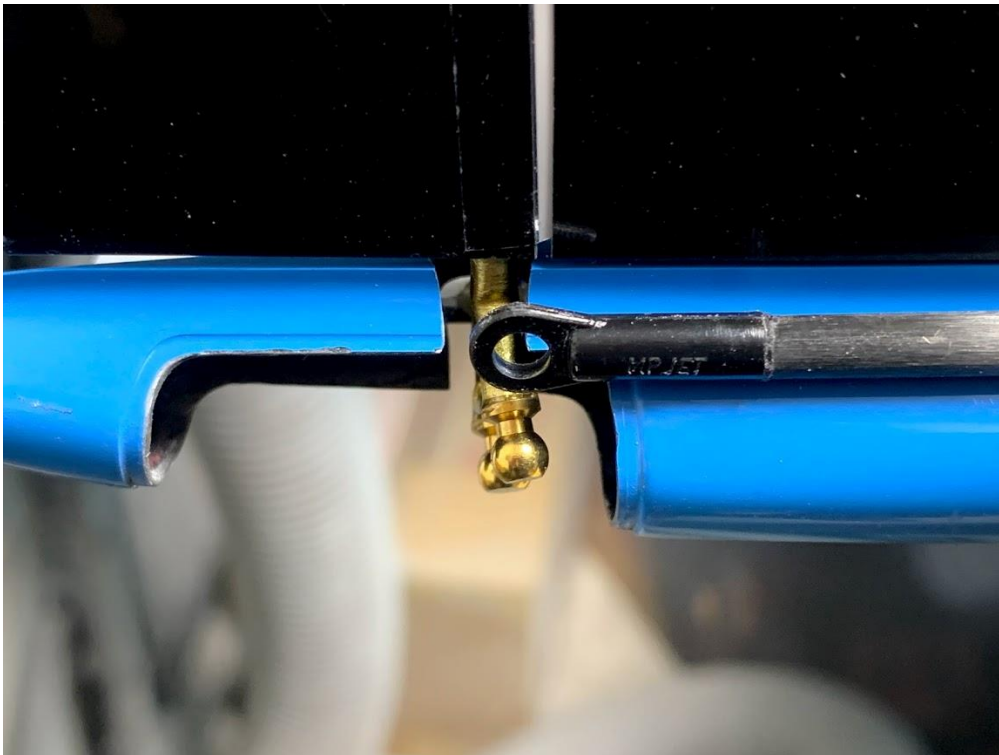


## FS-E fuselage servo installation hint

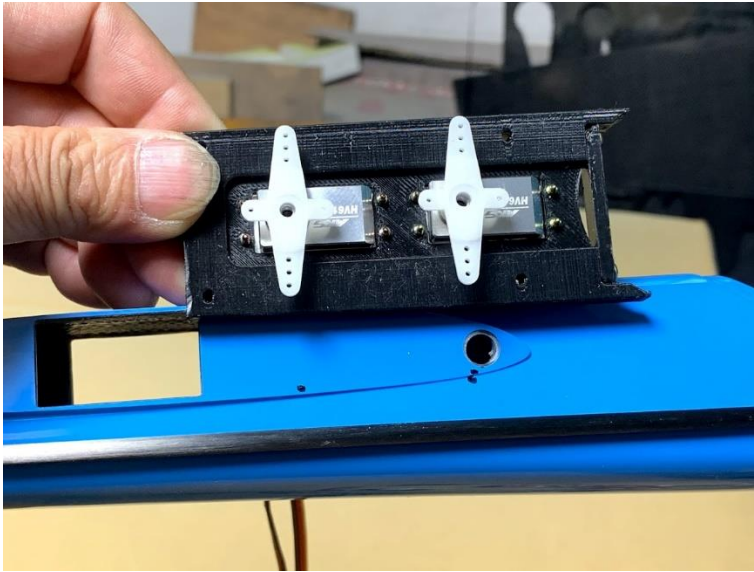
1, fix the servo to mount with sliding plate by screw



2, V-tail carbon rod length will be measured from tail ball linkage



3, fit the servo mount plate rear end to the front end of wing joiner hole and mark the servo arm position on the fuselage



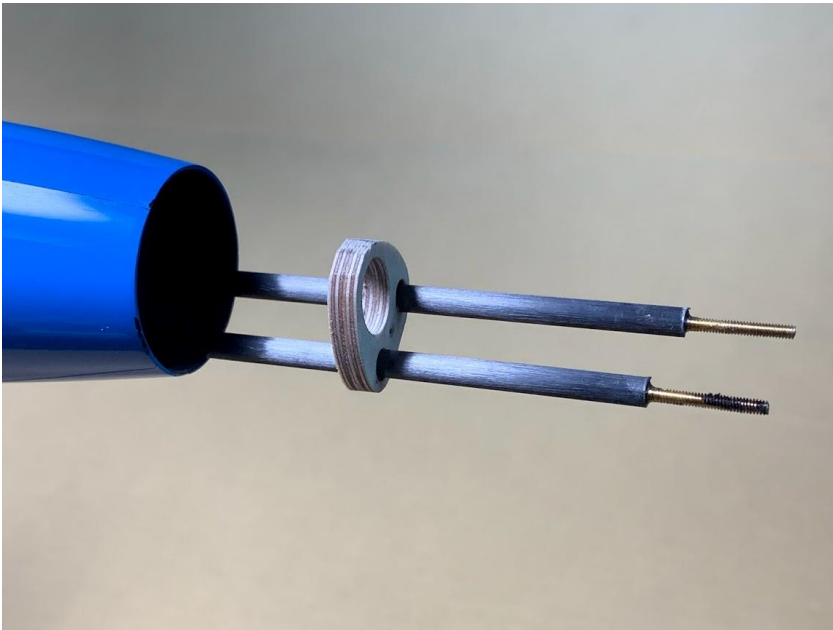
4, Cut the carbon rod correctly



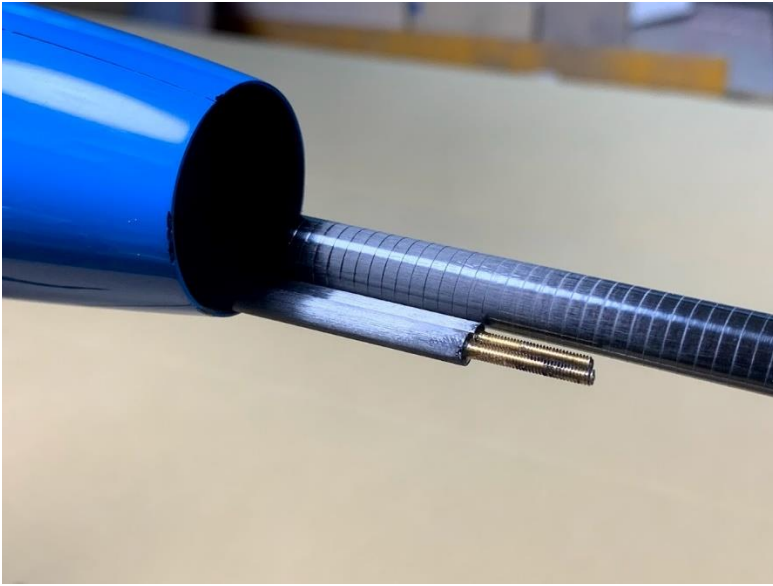
5, Glue the rod end



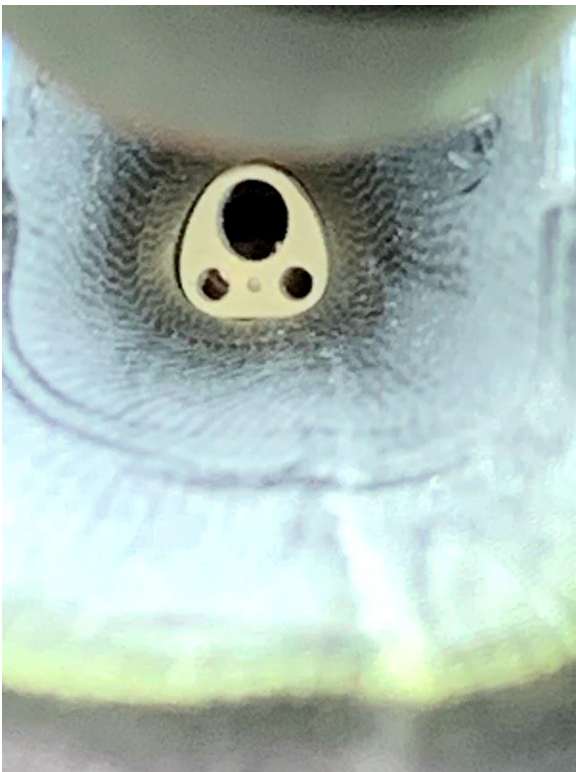
6, Pass the carbon rod through the fuselage plate hole



7, Push the fuselage plate into the fuselage toward rear end using large pipe or rod



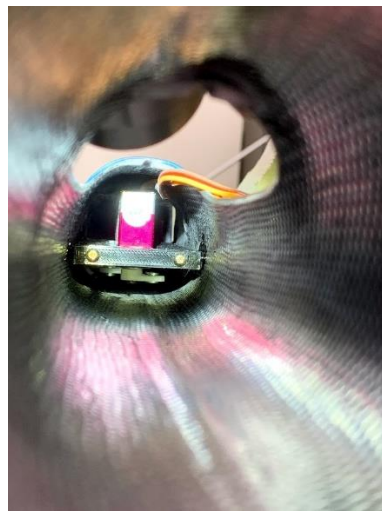
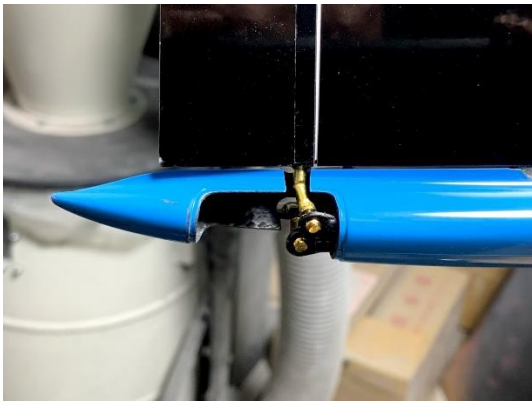
8, After positioning, pull out the carbon rod and glue the plate to fuselage by thin CA



9, Install the carbon rod from rear end

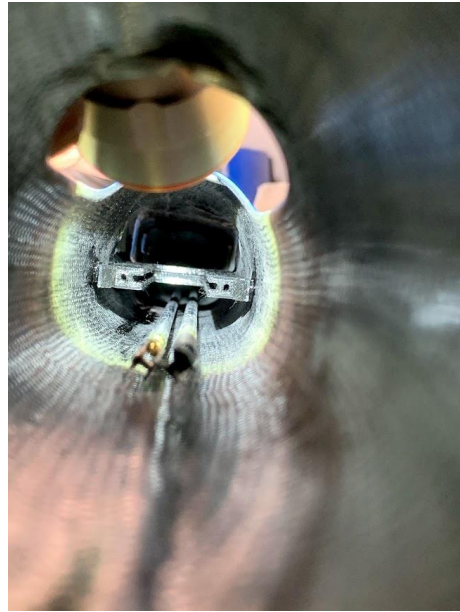
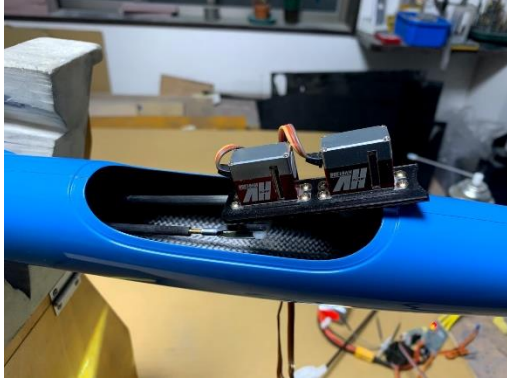


10, Fix the rod end to servo arm



11, Glue the servo mount plate temporarily on servo neutral position

12, Take out the servo with sliding plate and  
glue servo mount base plate to fuselage firmly



Good luck with FS e-fuselage